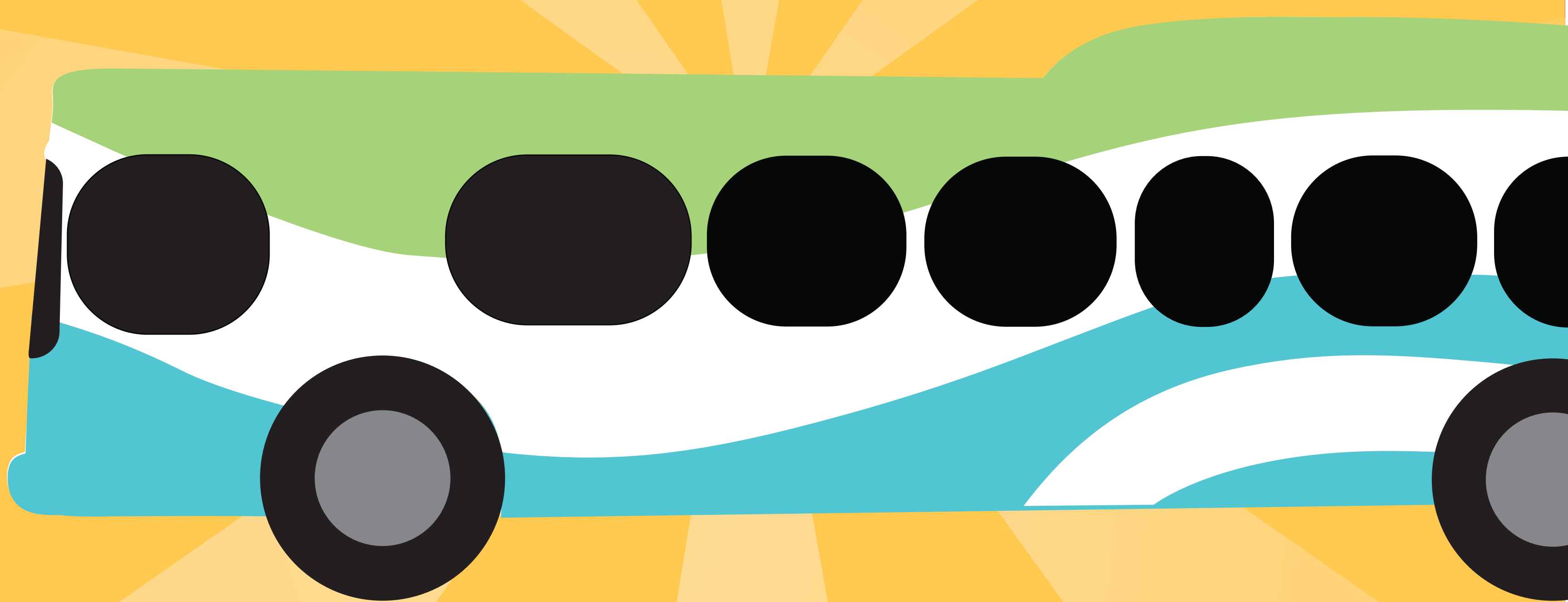


There are signs
all around us...



What do
they say?

Why are
they there?



How do
they help
us?





ello

Everyday Language &
Literacy Opportunities

Ello Friends
Did you know

Birth to five is the most rapid
period of brain development.



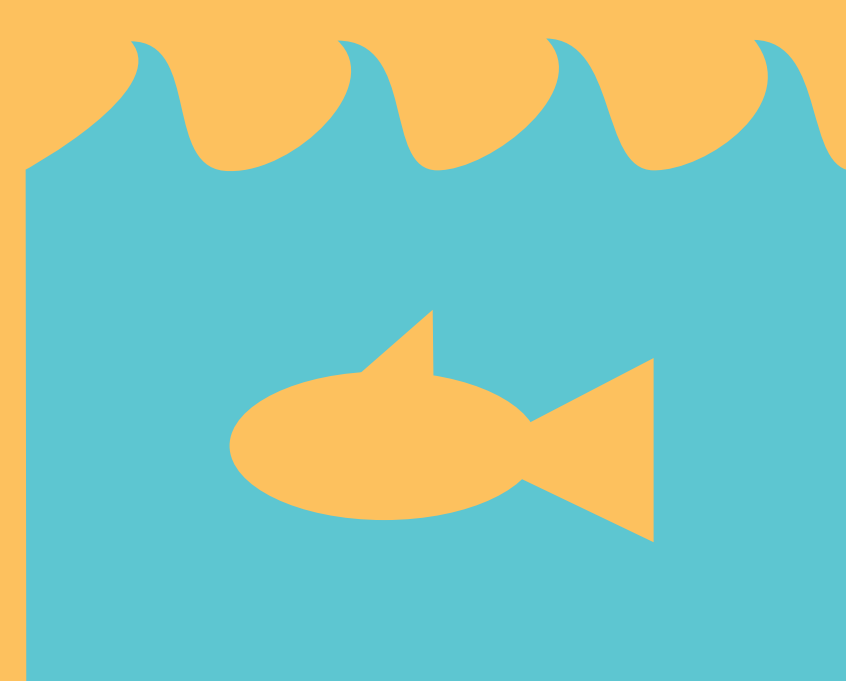
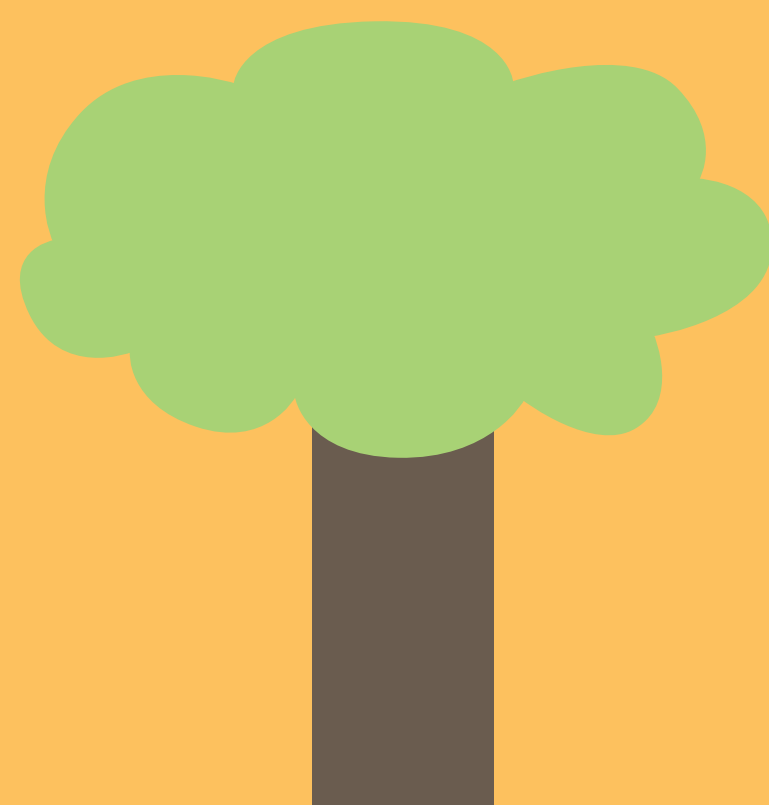
Let's predict...

where do the buses
take people?



Let's imagine...

If the bus could take
me anywhere, I'd go...

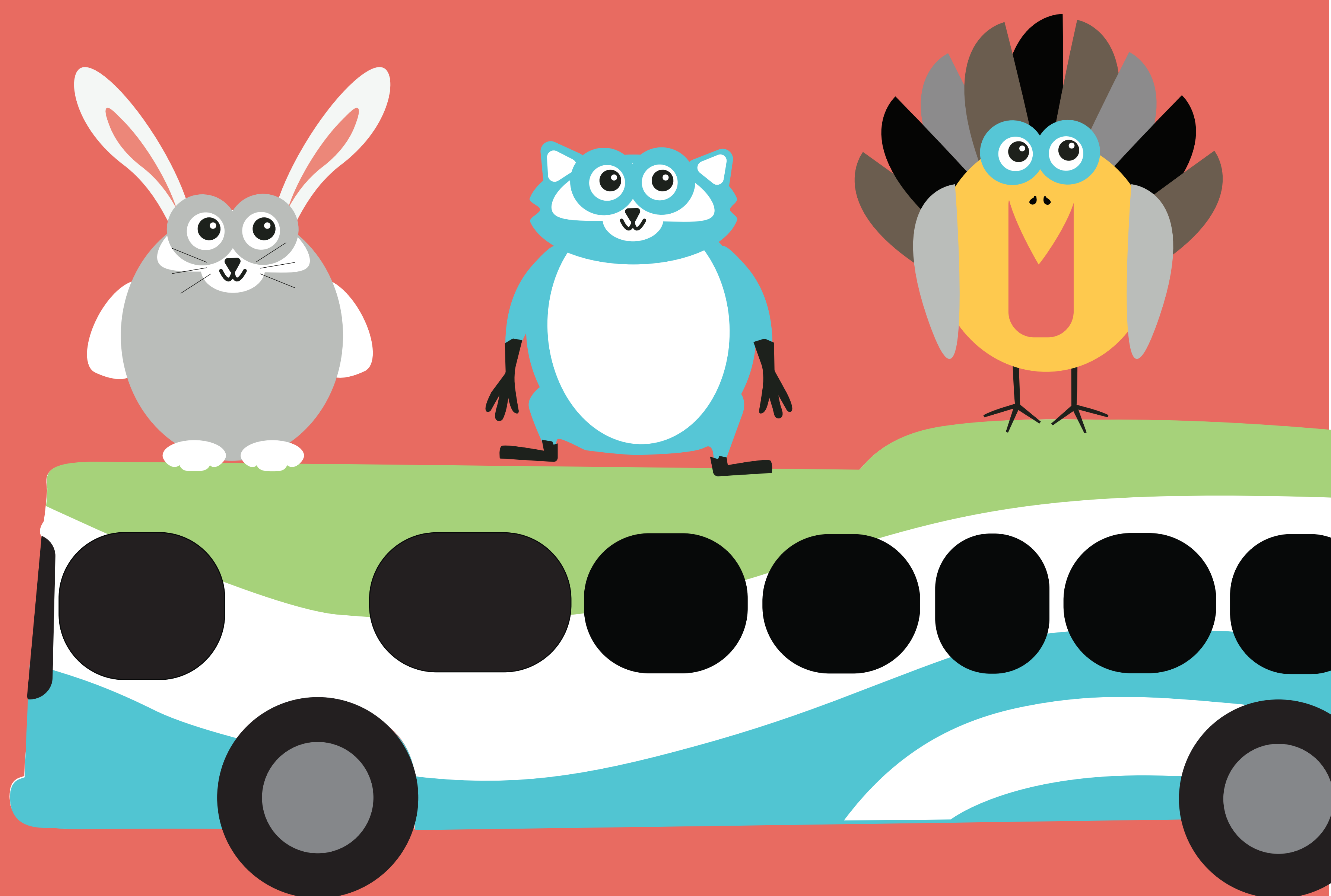


Ello Friends did you know

The more you talk to
your child the more
your child learns



Let's estimate...
how many?



...buses in Spokane?

...stops does the bus make?

...minutes is our bus ride?



Everyday Language &
Literacy Opportunities





ello

Everyday Language &
Literacy Opportunities

Ello Friends
Did you know

Birth to five is the most rapid
period of brain development.



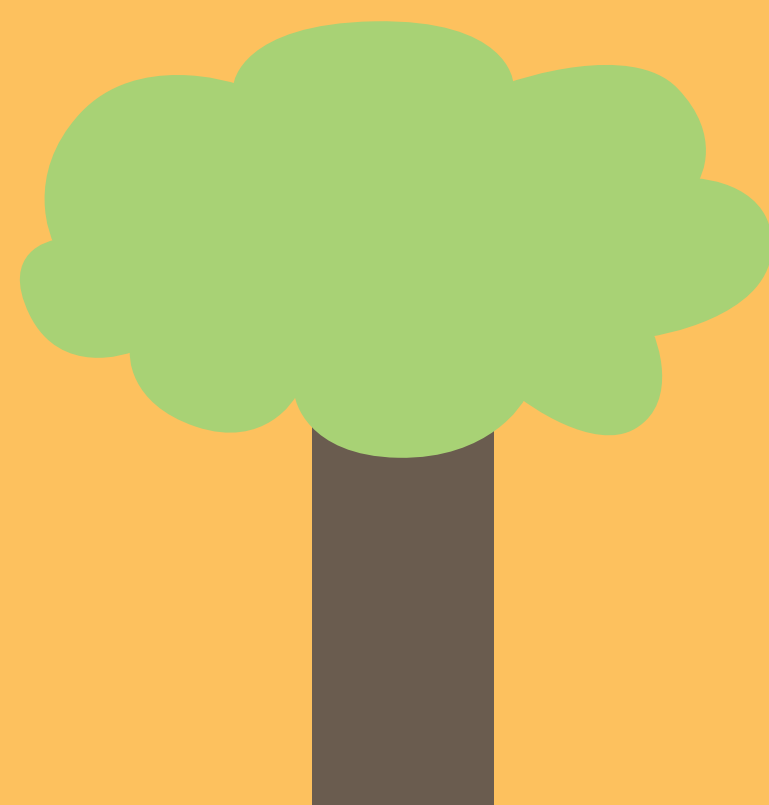
Let's predict...

where do the buses
go at night?



Let's imagine...

If the bus could take
me anywhere, I'd go...

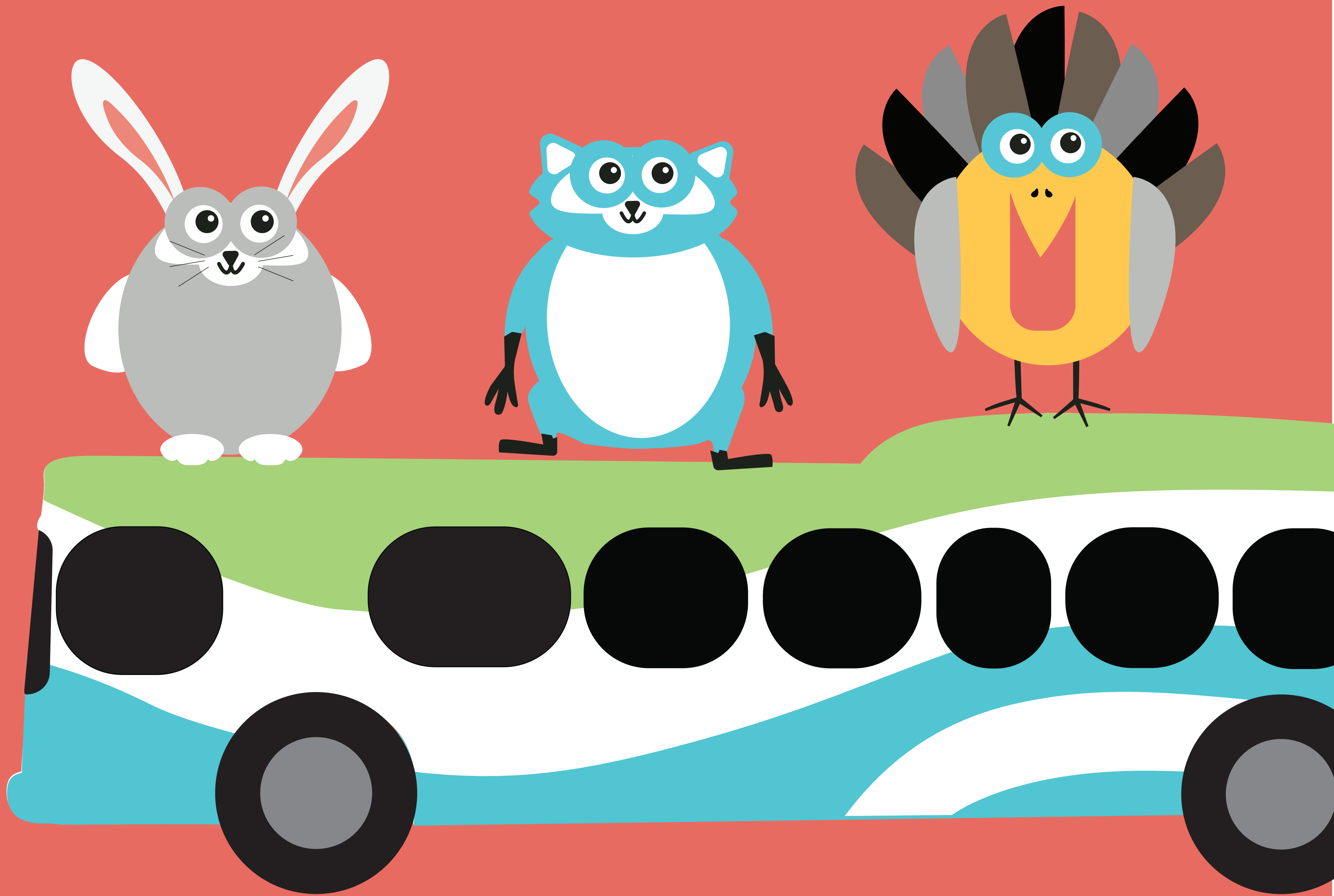


Ello Friends did you know

The more you talk to
your child the more
your child learns



There's lots happening
in our city...



Where are people going?

How are they traveling?

Where are we going?



Everyday Language &
Literacy Opportunities





ello

Everyday Language &
Literacy Opportunities

Ello Friends
Did you know

Birth to five is the most rapid
period of brain development.



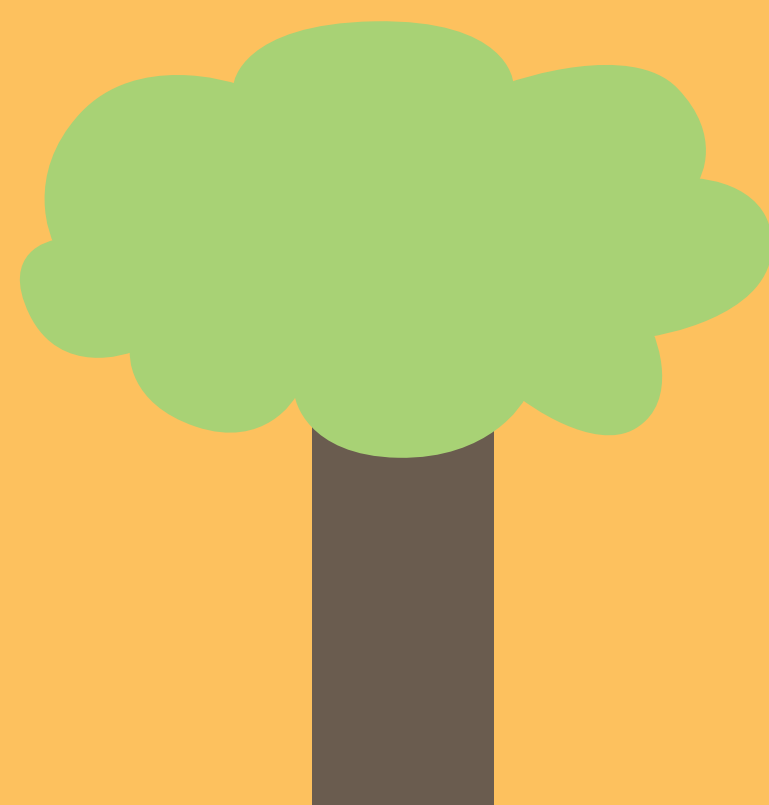
Let's compare...

Are all buses the
same?



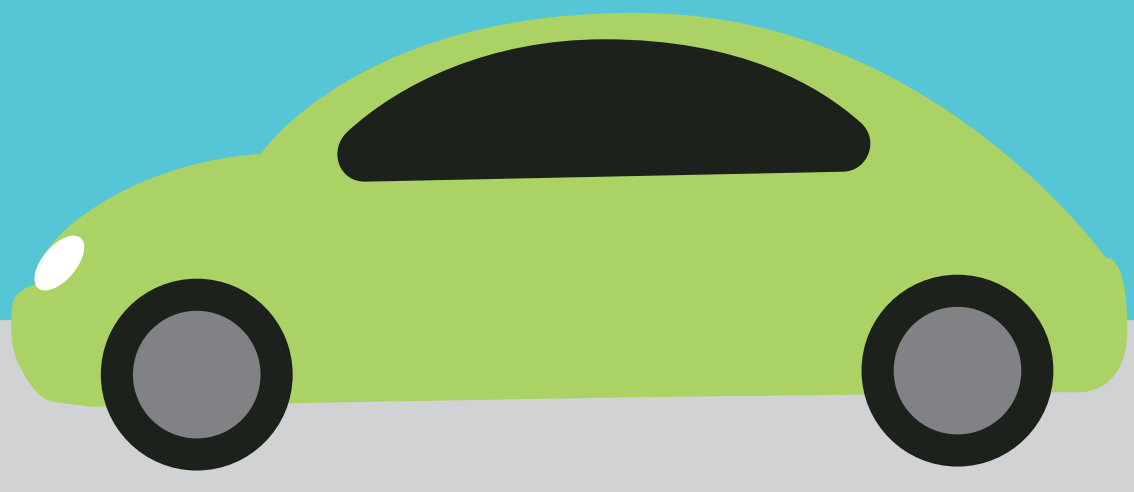
Let's imagine...

If the bus could take
me anywhere, I'd go...



I spy with my eagle eye...

different colored cars!



Let's count...
How many cars
do you spy?

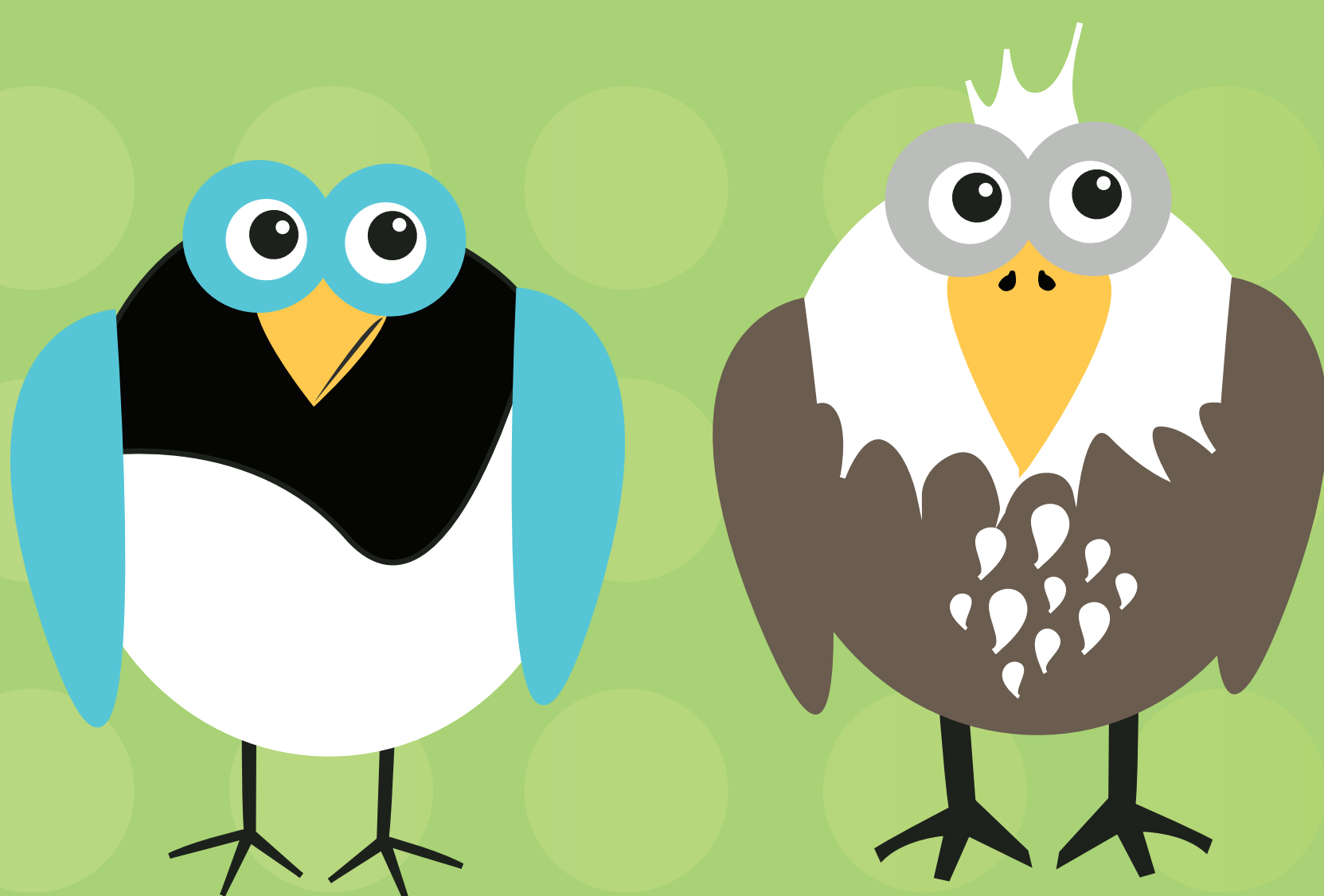


How are
they alike?

How are
they
different?



90% of a child's
brain is developed
before kindergarten.

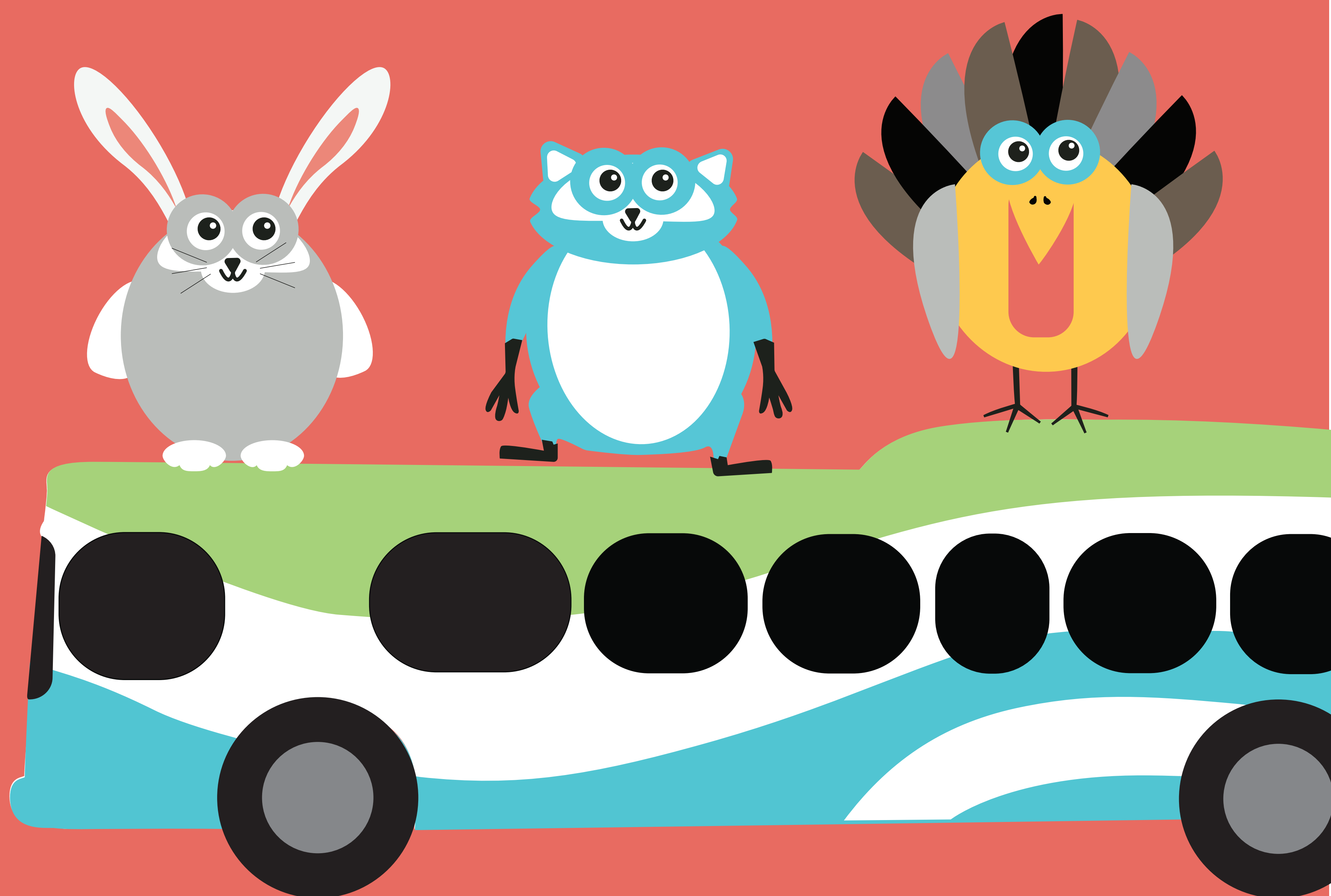


Ello Friends did you know

The more you talk to
your child the more
your child learns



Buses travel
on the road...



What travels to the sea?

In the sky? To the moon?

Where would you travel to?



Everyday Language &
Literacy Opportunities





ello

Everyday Language &
Literacy Opportunities

Ello Friends
Did you know

Birth to five is the most rapid
period of brain development.



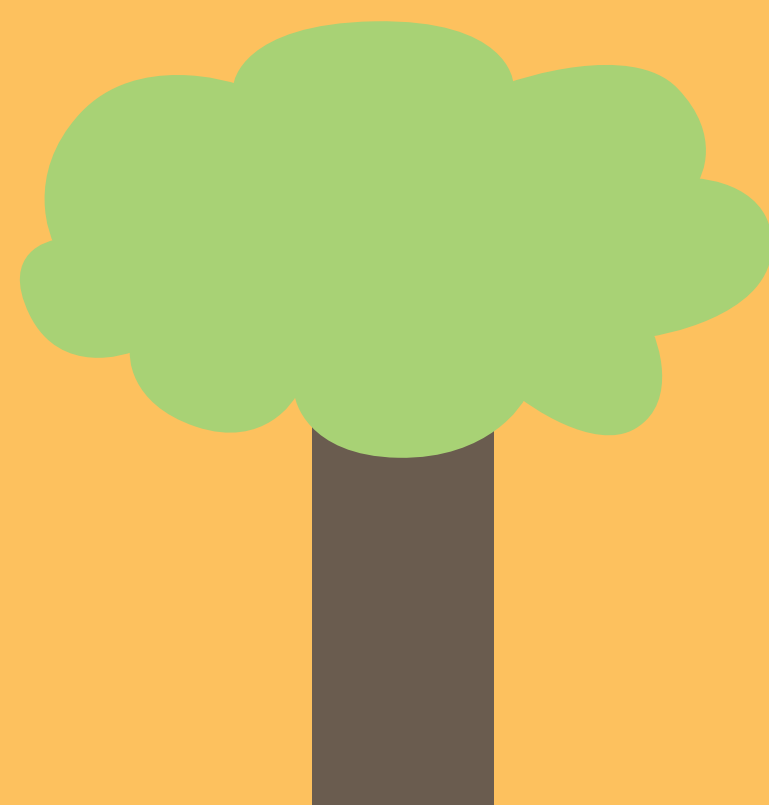
Let's compare...

Are all buses the
same?



Let's imagine...

If the bus could take
me anywhere, I'd go...





ello

Everyday Language &
Literacy Opportunities

Ello Friends
Did you know

Birth to five is the most rapid
period of brain development.



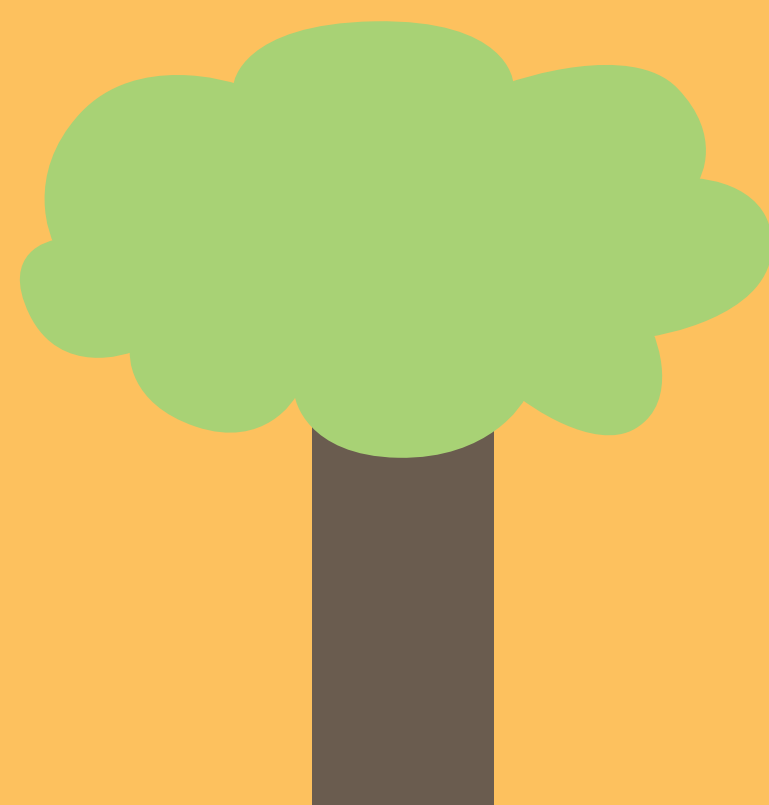
Let's estimate...

How many people
ride the bus?



Let's imagine...

If the bus could take
me anywhere, I'd go...





ello

Everyday Language &
Literacy Opportunities

Ello Friends
Did you know

Birth to five is the most rapid
period of brain development.



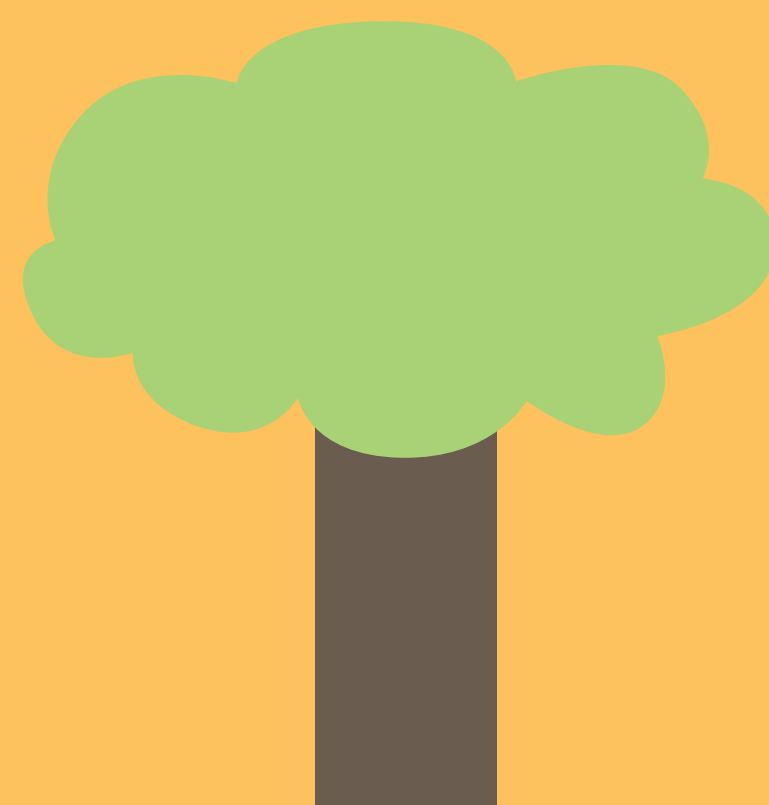
Let's predict...

where do the buses
take people?



Let's imagine...

If the bus could take
me anywhere, I'd go...



Buses travel
on the road...



What
travels in
the sky?



To the
moon?



On a
lake?

ello

Everyday Language &
Literacy Opportunities



ello

Everyday Language &
Literacy Opportunities

Ello Friends
Did you know

Birth to five is the most rapid
period of brain development.



Let's predict...

where do the buses
go at night?



Let's imagine...

If the bus could take
me anywhere, I'd go...

